



## HEALTH & WELLBEING BOARD

**Subject Heading:**

North East London Joint Forward Plan 2024-2025 Refresh

**Board Lead:**

**Report Author and contact details:**

Anna Carratt

**The subject matter of this report deals with the following themes of the Health and Wellbeing Strategy**

<input checked="" type="checkbox"/>	<b>The wider determinants of health</b> <ul style="list-style-type: none"><li>• Increase employment of people with health problems or disabilities</li><li>• Develop the Council and NHS Trusts as anchor institutions that consciously seek to maximise the health and wellbeing benefit to residents of everything they do.</li><li>• Prevent homelessness and minimise the harm caused to those affected, particularly rough sleepers and consequent impacts on the health and social care system.</li></ul>
<input checked="" type="checkbox"/>	<b>Lifestyles and behaviours</b> <ul style="list-style-type: none"><li>• The prevention of obesity</li><li>• Further reduce the prevalence of smoking across the borough and particularly in disadvantaged communities and by vulnerable groups</li><li>• Strengthen early years providers, schools and colleges as health improving settings</li></ul>
<input checked="" type="checkbox"/>	<b>The communities and places we live in</b> <ul style="list-style-type: none"><li>• Realising the benefits of regeneration for the health of local residents and the health and social care services available to them</li><li>• Targeted multidisciplinary working with people who, because of their life experiences, currently make frequent contact with a range of statutory services that are unable to fully resolve their underlying problem.</li></ul>
<input type="checkbox"/>	<b>Local health and social care services</b> <ul style="list-style-type: none"><li>• Development of integrated health, housing and social care services at locality level.</li></ul>
<input checked="" type="checkbox"/>	<b>BHR Integrated Care Partnership Board Transformation Board</b> <ul style="list-style-type: none"><li>• Older people and frailty and end of life</li><li>• Long term conditions</li><li>• Children and young people</li><li>• Mental health</li><li>• Planned Care</li></ul> <div>Cancer Primary Care Accident and Emergency Delivery Board Transforming Care Programme Board</div>



## SUMMARY

- 1.1 The NEL Joint Forward Plan (NEL JFP) 2024-2025 Refresh draft document, attached, follows on from the first JFP 23/24 submitted in June this year. The expectation is that our system's five-year plan is refreshed yearly and submitted to NHSE by the end of March each year. It will therefore continue to describe how we will, as a system, deliver our Integrated Care Partnership Strategy as well as core NHS services.
- 1.2 As a partnership, we continue to work towards developing a cohesive and comprehensive delivery plan for meeting all the challenges we face. As part of these annual refreshes going forward we will work with local people, partners and stakeholders to iterate and improve the plan as we develop our partnership, to ensure it stays relevant and useful to partners across the system.
- 1.3 For next year's 2024/2025 refresh we have maintained much of the core information and headlines that are in the current iteration. Updating and amending statistics and information where relevant.
- 1.4 Key additions that will be made for next year's NEL JFP include dedicated slides for our Place-based Partnerships and the identified cross-cutting themes within our interim strategy, as well as all our system improvement portfolios.
- 1.5 At this stage it must be emphasised that this version of the JFP is draft with refinements taking place until 23<sup>rd</sup> February.
- 1.6 Havering Place-based Partnership have in their information indicated the vision and ambition to pool collective resources to develop person centred seamless care designed around the needs of the local population throughout their life course. Key programmes to support delivery of the ambition include:
- **Start Well;** Children and young people get the best start in life, are able to achieve the best opportunities and keep as healthy and well as possible throughout their lives
  - **Live Well;** People enjoy and are able to maintain a sense of wellbeing and good health, supported by resilient communities. They can access care and information when needed.
  - **Age Well;** People are able to live independently in their own homes with appropriate care and support to maintain and develop their social and community networks
  - **Die Well;** People are supported to ensure the last stages of their life happen in the best possible circumstances, receiving the right help at the right time from the right people

## RECOMMENDATIONS

It is recommended that the HWBB:

- note why the JFP refresh is being undertaken and the approach being followed in order to deliver a refreshed NEL 24/25 JFP by March 2024



- note what has been collated thus far from all contributors (Appendix 1- Draft JFP 24/25)
- constructively make suggestions and comments

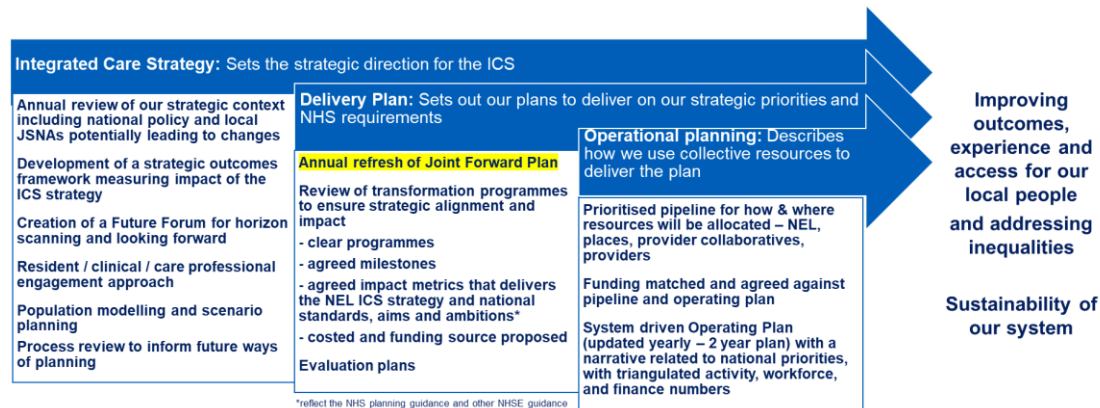
## REPORT DETAIL



The NEL system planning cycle has been divided into three steps:

- 1) integrated care strategy,
- 2) delivery plan, and
- 3) operational planning.

These are outlined below with related deliverables included below each step. These are not comprehensive but indicate some of the key activities underpinning each stage.



## Joint Forward Plan (JFP) Refresh for 24/ 25 next steps

NEL ICB was formed on 1 July 2022 following the [Health and Care Act 2022](#), and we published our interim Integrated Care Strategy in January 2023. This was followed by the Joint Forward Plan 23/24, our first five-year plan.

<https://www.northeastlondonhcp.nhs.uk/ourplans/north-east-london-nel-joint-forward-plan/>

Based on feedback and lessons learnt we are engaging with NEL System stakeholders earlier within the system planning cycle in order to ensure improved awareness and input to the 24/25 JFP. There will be annual refreshes of the JFP going forward in order to ensure that the document remains current. This JFP refresh continues to describe the challenges that we face as a system in meeting the health and care needs of our local people, but also the assets we hold within our partnership.

## High-level timeline

**24 November 2023**

We asked all slide contributors to submit their initial draft plans for 2024/25 for the JFP, providing a summary list of projects, and resourcing requirements.

**13 December 2023**

A portfolio workshop will be held with leads from the system portfolios, Places, cross-cutting themes and enablers. We aim to develop greater cohesion between portfolios, identify any synergies or duplication we need to address, but also to allow everyone share feedback on each other's plans.

**9 January 2024**

We will ask for updated slides based on the feedback from the December workshop.

**February 2024**

By 23rd February, all JFP contributors will need to submit their final plans/ JFP slide input, ready for sign off via appropriate meetings prior to submission by end of March 2024.

## Main changes from the previous JFP



As we published our first JFP on 30 June 2023, we propose to keep the structure of the JFP, with some minor adjustments, as outlined below. Where references are made to figures, these will be updated to reflect the latest position.

Main additions:

- New slides to ensure we cover:
  - all our strategic system improvement portfolios in addition to our four strategic system priorities
  - our Place plans
  - our six cross-cutting themes and
  - our enablers
- We have also included new slides outlining:
  - what is important to our residents and how it impacts our plans,
  - our successes to date, and
  - how we are developing a strategic outcomes framework to help us assess if we are having an impact.

## IMPLICATIONS AND RISKS

Implication: The draft current version of the JFP 2024/ 2025 will have opportunities for further iteration leading up to the 23<sup>rd</sup> February.

## BACKGROUND PAPERS

Appendix 1: Joint Forward Plan 24-25 - INITIAL DRAFT v1.0

The NEL Joint Forward Plan 2023/ 2024:

<https://www.northeastlondonhcp.nhs.uk/ourplans/north-east-london-nel-joint-forward-plan/>